

Spa/Pool Hub Enquiry Form



Company Details:

Company Name:

Contact Name:

Job Ref:

Email:

Date:

Telephone:

Site Electrical Supply

Single Phase

Three Phase

Is the plant room going to be 30degree C or over?

What kind of setting is the Spa/Pool going in?

Commercial

Domestic

Business use (eg 1 x Holiday lodge with a Spa)

Indoor

Outdoor

There are several options available. We can supply the controller only for you to use with your existing Spa/pool equipment or we can supply a complete package including all the Spa/pool equipment needed for your project.

1. What do you want the Spa/Pool Hub to control/operate?

One Spa

One Pool

Two Spas

A Spa and a Pool

2. Do you require just the controller (using your own or existing equipment) or one of our equipment packs complete with a controller? Please tick one of the options below.

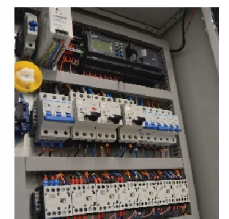
A. **Controller Only** (Spa Hub)

The most flexible and cost effective option. We provide the touch screen controller & systems management for your electrician to then configure, the electrician will need to provide all the control & protection, contactors, MCBs etc and then wire up to your spa and pool equipment. This option has volt free outputs relays & input for sensors & high limit contacts. **Retail Price from £2,999 + VAT (Trade discounts available)**



B. **Controller – Pre wired & Configured** (Spa Hub. Plus)

An intermediate solution with a pre-wired and pre-configured control panel enclosure with all the switch gear & contactors ready for you to connect up your Spa/Pool equipment. **Retail Price from £5,999 + VA (Trade discounts available)**



C. **Controller & Equipment Pack** (Spa Hub. Pack)

A complete plug and play solution with everything you need to control your pool & spa on either one or two neat trays/frames. Here we provide all the pumps and equipment to your specification pre-wired and pre-configured. Just connect up plumbing & power & any remote switches. **Retail Price from £9,499 + VAT (Trade discounts available)**



We can also supply other spa equipment including Pre-plumbed spa shells, balance tanks, pipework & fittings. Do you need any of the following?

Overflow Spa Shell – in ground Shape _____ Size/dimensions _____ Pre-Plumbed

Tiled Spa Shell Shape _____ Size/Dimensions _____ Finish _____

Balance Tank (Size) _____ Pipework & Fittings Other Spa type _____

If you require option B or C please complete the following questions:

Details of the Spa:

What type of spa are you installing:

Overflow Spa Skimmer/Freeboard Spa (Note: Not suitable for portable spas)

Volume of water in Spa _____ Dimensions of spa _____

Spa System Details:

Pumps

Filter Pumps Quantity _____ KW/HP each _____ Single Phase Three Phase

Amps each _____

Boost Pumps Quantity _____ KW/HP each _____ Single Phase Three Phase

Amps each _____

Air

Blower Yes/No _____ KW/HP _____ Single Phase Three Phase

Filters

Filtration System Type Sand Filters Cartridge Filters

Heating

Electric Heating Yes/No _____ KW _____ Single Phase Three Phase

If other, what type of heater are you using? Gas, electric etc _____

Heat Exchanger Valve Req'd Yes No

Eg. if using a boiler you may require a heat exchanger

Sanitising Equipment Salt Chlorinator Chlorine Feeder None

Other details: _____

Spa Controls (Remote Switches (Spa Side))

Type of remote Switches (spa side) LED Touch Buttons

Round Touch Pad

Oval Touch Pad



What functions do you want the bather to be able to operate?

Boost pump on/off

Blower on/off

Lights on/off

If Overflow spa – Do you want automatic level control on balance tank YES/NO
(solenoid valve to top up)

Other details about your project.

Pool details (if applicable)

If you would like the Spa/Pool hub to manage & control your Pool as well as your Spa then we need to know some details about the Pool installation.

Confirm Electrical Site supply (3 or single phase) & Capacity

Indoor / outdoor pool

Pool Size – Dimensions:

Pump Size:

Sand Filter size:

Heating method:

Feature pump: YES/NO

Lights - Quantity

LED or other?

Sanitising system?

Do you have all the pool equipment already?

If no would you like us to quote for supplying a Pool Equipment Pack?

Other Pool project details.